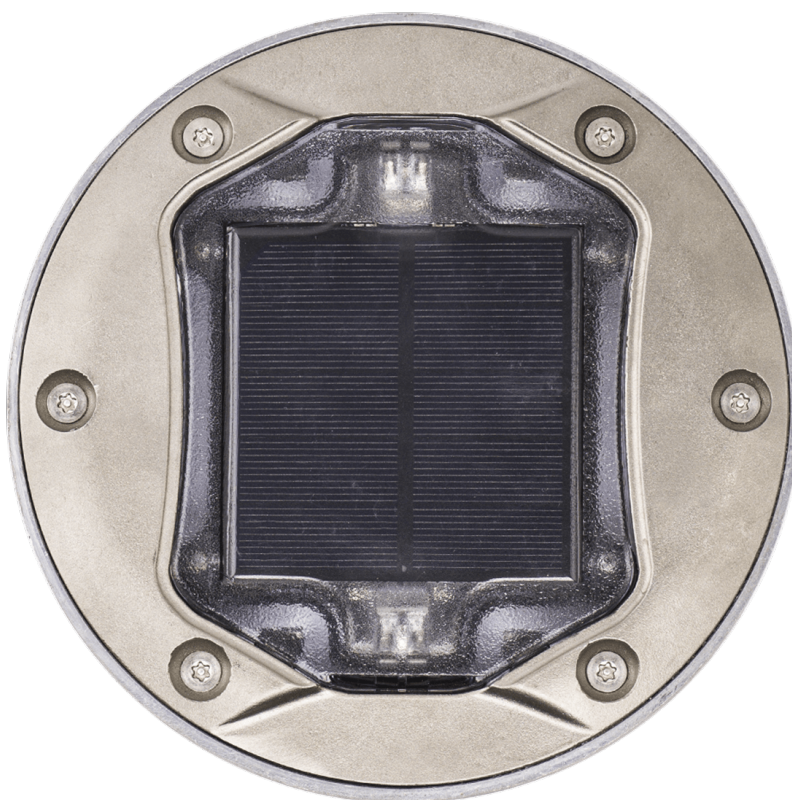
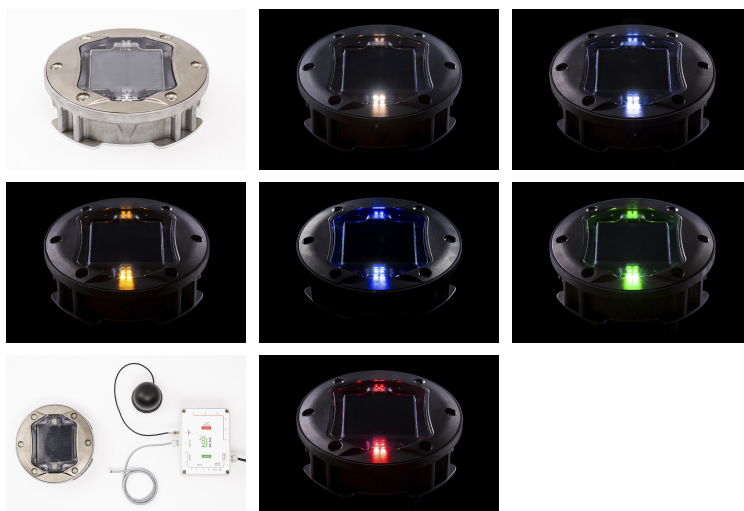
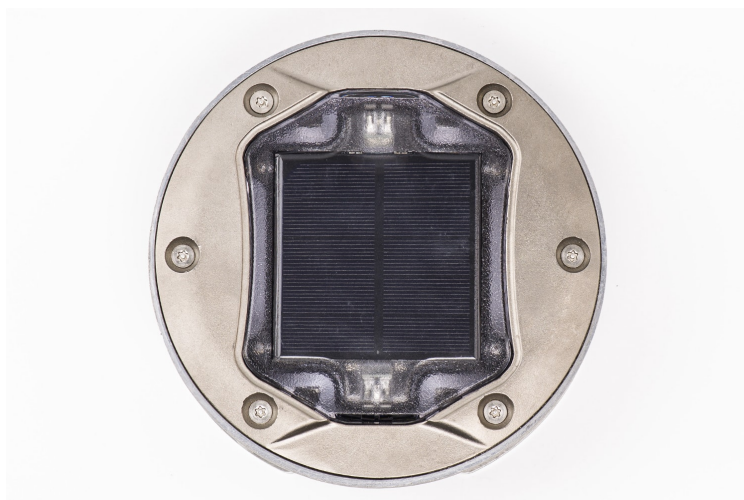


ECO-190

SOLAR - Embedded solar studs





High performance stainless steel roadside stud.

The ECO-190 solar LED stud is adapted to the most demanding uses: high mechanical resistance, large solar panel allowing good recharging in all conditions, electronic battery management to optimise life. Stainless steel alloy cover, easy maintenance, very small projection for the passage of snow plough blades.

Applications

Roundabouts, Pedestrian crossings, Chicanes / Build-outs, Raised platforms, Roads / Expressways

Resistance



Standards



20 Joules

LED Colors



Beaconing

1 LED, 2 LED, 4 LED

Customization

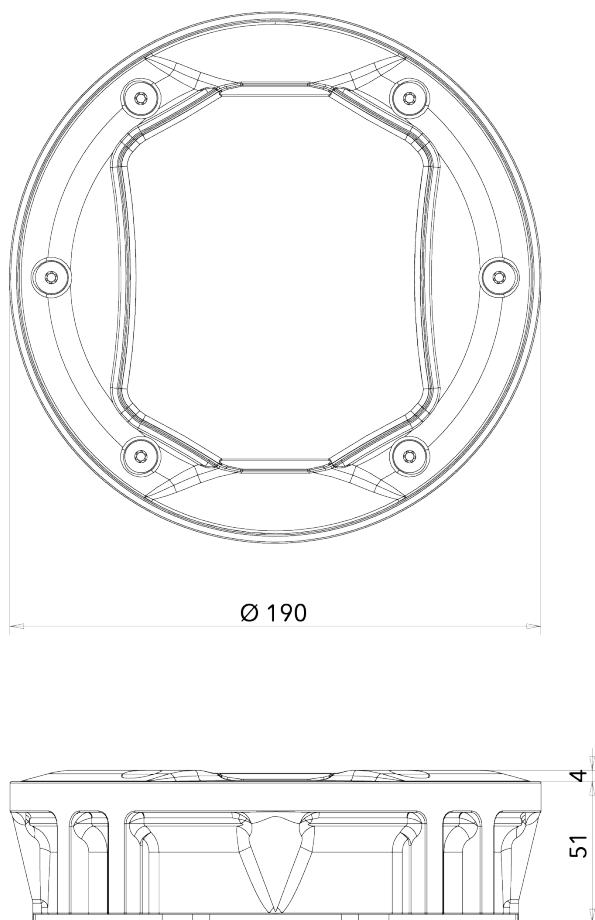
Snowplough cover, Stainless steel cap

Recycling



Certifications





Unit : mm - Tolerance +/- 0.5mm. © Eco-innov - All rights reserved.

TECHNICAL CHARACTERISTICS

Dimensions and weight

Upper diameter: 190 mm.

Total height: 55 mm.

Height above roadway: 4 mm in the centre of the stud (suitable for snow plough blades).

Weight: approximately 2,7 Kg.

Materials

329LN stainless steel alloy (cover), Aluminium (base), Polycarbonate (optical module), Recycling managed by ECOSYSTEM.

Energy storage

Ni-Mh accumulator.

Working temperature range

-25°C to +85°C.

Protection indices

IP 68 (watertightness).

IK 10 (impact resistance).

Pressure resistance

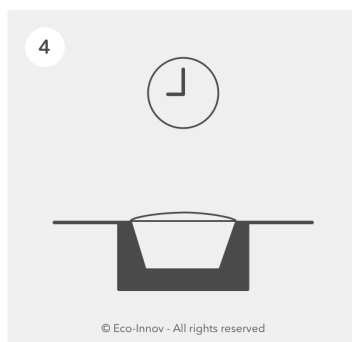
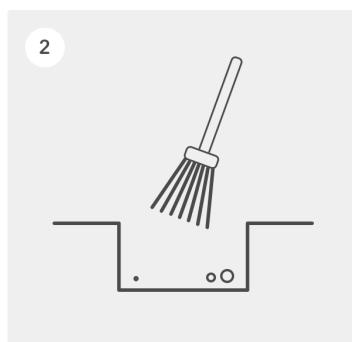
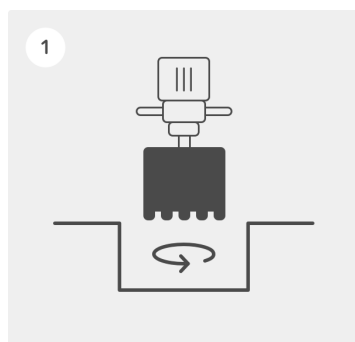
Suitable for 80-tonne trucks.

LIGHTING CHARACTERISTICS

Unidirectional or bidirectional beaconing, 1 or 2 LEDs per side.

Constant or blinking 2.5Hz (2.5 flashes per second) $\pm 10\%$.

LEDs colours: warm white 3000K, neutral white 4000K, cool white 6500K, blue, green, red, amber.



1 - After deciding where the studs are to be installed, drill a hole with a minimum diameter of 200 mm and 70 mm deep.

2 - Carefully brush and clean the hole to remove any dust and traces of damp that would affect the efficiency of the adhesive.

3 - Pour the appropriate bonding adhesive into the hole and insert the stud into the adhesive. Use a mallet to position the stud flush with the ground surface. Make sure the LEDs are facing the right way and are parallel to the ground. Immediately remove any residual adhesive from around the stud. If the stud is installed on a tarred concrete support, we recommend using Sikadur 30 two part epoxy adhesive. On a wooden support, we recommend using less rigid adhesives (Please contact us for further information).

4 - Place a weight on the stud until the adhesive has set (refer to the instructions).

Remark: make sure to keep the module and LEDs clean and protect them throughout these operations.

Failure to comply with these instructions may lead to the guarantee being suspended.

Lifespan and warranty**BATTERY**

Ni-Mh accumulator: Average lifespan more than 7 years. 2-year warranty*

Easy maintenance via the product cover.

* The warranty applies in the event of complete failure of the self-contained lighting system during normal usage. It covers replacement of the faulty article with an identical model delivered free of charge to destinations in France, after the faulty article has been returned and analysed. On-site intervention fees are not included. Mechanical damage are not covered by the warranty.

For optimal operation, we recommended to install our solar equipment on sites with good light exposure.

Recycling

ECO-INNOV is a founder member of a network that recycles professional WEEE, managed by the eco-organisation ECOSYSTEM. We pay for our customers' electronic safety, lighting and regulation equipment to be collected at the end of its working life in order to meet our legal obligations and help them to meet theirs.

The unique identifier FR006801_05MBCK attesting to registration in the register of producers in the EEE sector, pursuant to article L.541-10-13 of the Environmental Code, has been assigned by ADEME to the company ECO-INNOV (SIRET 451 859 409 00026). This identifier certifies its conformity with regard to its obligation to registration in the register of producers of Electrical and Electronic Equipment and the realisation of its declarations of placing on the market with Ecosystem.

ECO-INNOV is thus one of the first producers to offer its customers a simple and free solution for collecting their professional WEEE, regardless of when it was marketed. The equipment is collected via a network of professional waste collection centres and certain wholesalers.



www.ecosystem.eco