

ECO-FLEX 80

REFLEX - Flexible bollard





Reflective flexible bollard

A flexible, memory-form bollard with an 80 mm diameter, designed for high resistance to frequent use.

Ideal for marking zones in private sites, industrial areas, parking lots, or public spaces, ensuring user protection while minimizing or eliminating damage to equipment.

Flexible, self-righting structure: its memory-form technology allows it to return to its original shape after impact, reducing maintenance costs.

Equipped with three 3M reflective bands compliant with EN12899-3 standards, providing optimal visibility day and night.

Glass beads positioned at the base further enhance visibility.

Made from UV-protected polyurethane for long-lasting durability.

Various customisation options are available—[contact us for details](#).

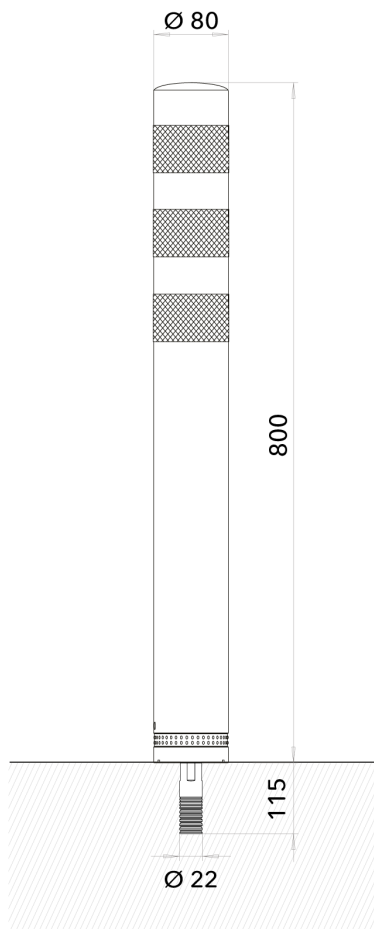
Anchoring base adapted to the type of support and site-specific constraints.

Applications

Car parks, Footpaths, Industrial sites

Certifications





Unit: mm - Tolerance +/- 0.5mm. Eco-Innov - All rights reserved.

TECHNICAL SPECIFICATIONS

Description

Flexible bollard with shape memory structure that automatically springs back into its original shape after an impact, without damaging the seal. Protects users, particularly 2-wheelers, from head impacts compared to a steel post.

Dimensions

Diameter: 80 mm.

Height above ground: 800 mm.

Weight: 1.450 kg.

Aluminium anchoring foot: diameter 22 mm x height 115 mm.

Bollard colour

Black (RAL 9005).

Custom RAL available based on quantity.

Reflective elements

3 white reflective strips.

Reflective glass beads for additional signage.

Other configurations on request.

Installation instructions

Core drill 34 mm in diameter x 125 mm deep minimum. Sealed with SIKADUR 30 or SIKADUR 42 epoxy adhesive.

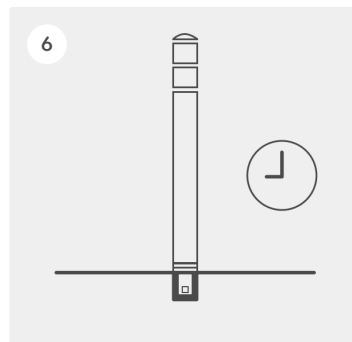
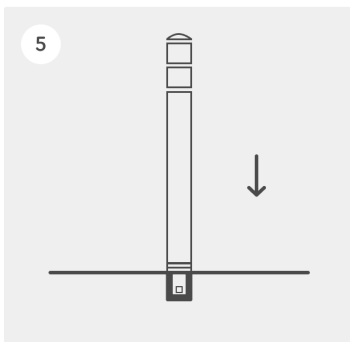
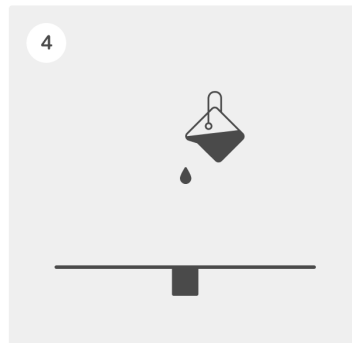
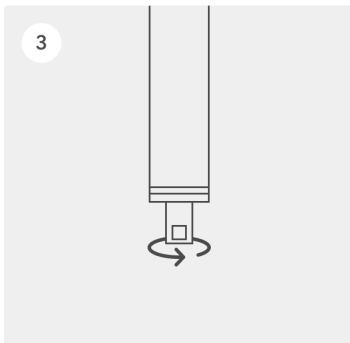
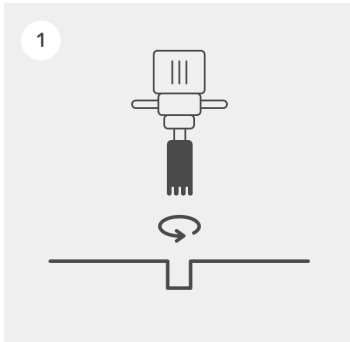
Maintenance

Post screwed into its anchoring foot.

Simple temporary replacement or removal.

Applications

Delimiting private areas, industrial sites, car parks or public spaces.



© Eco-Innov - All rights reserved

1. After spotting the bollards location, drill a hole 34 mm in diameter and 125 mm deep.

2. Carefully brush and clean the hole to remove any dust and traces of damp that would affect the efficiency of the adhesive.

3. Screw the anchor foot firmly under the post.

4. Pour the appropriate bonding adhesive into the hole about 2/3 of the way down. To assess the correct quantity of adhesive, make sure that it extends all the way to the bottom of the post without creating any extra thickness. We recommend using SIKADUR 30 or SIKADUR 42 two-component epoxy adhesive.

5. Insert the bollard into the hole filled with adhesive.

6. Allow the adhesive to dry before applying any mechanical stress and before re-establishing traffic (refer to the adhesive's instructions for use).

– Failure to follow these instructions may invalidate the warranty.