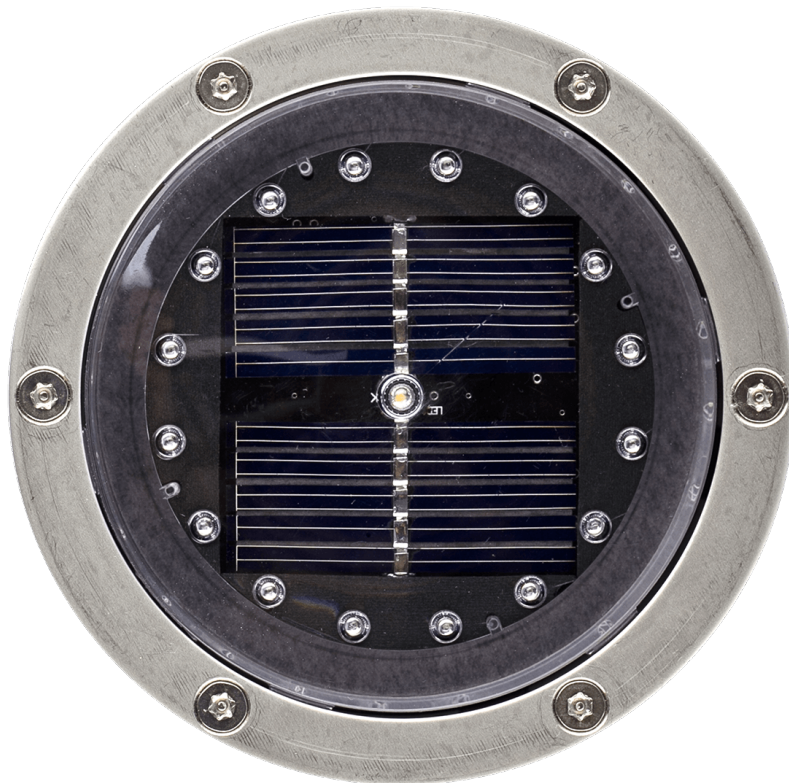
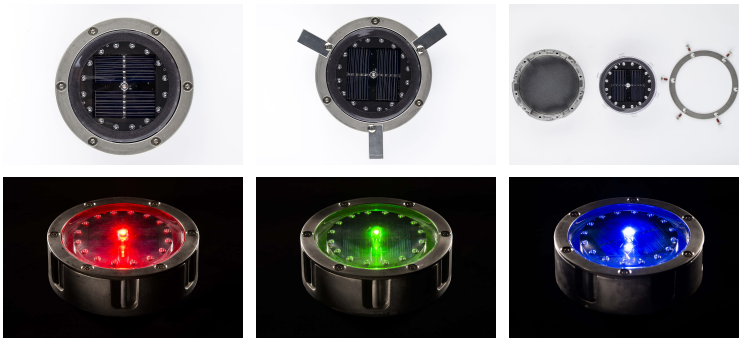
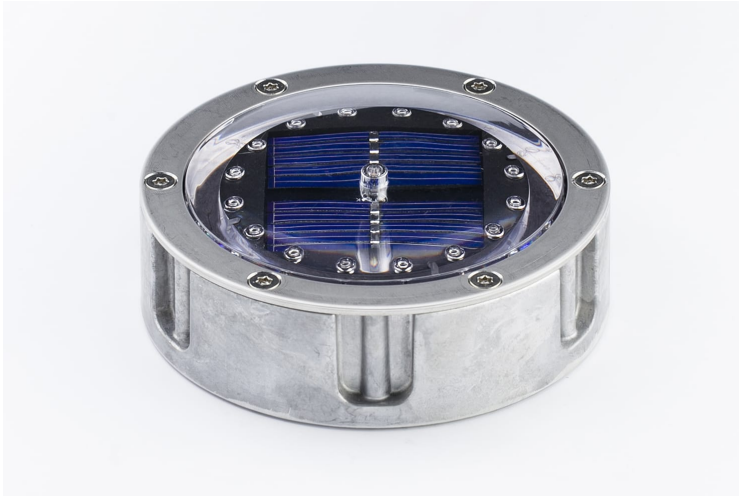


# ECO-120

SOLAR - Embedded solar studs

---





### Embedded solar stud

Autonomous LED beaconing suitable for pedestrian or cycle ways. 1 vertical LED with 16 reflective glass beads for a 360° visibility. Easy maintenance of electrical unit.

### Applications

Eco-districts, Footpaths

### Resistance

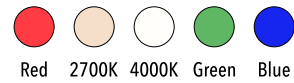


### Standards



20 Joules

### LED Colors



### Beaconing

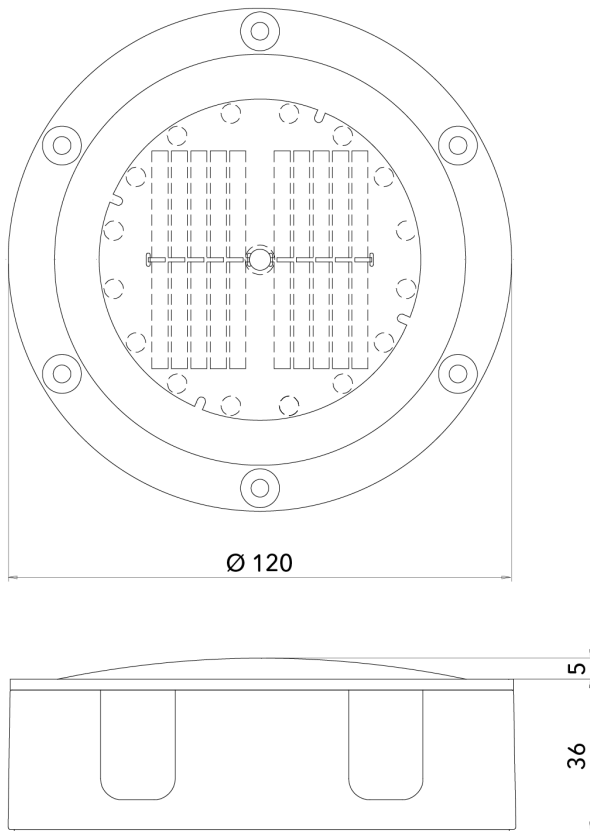
1 LED, 360°, Constant, Vertical, Breathing

### Recycling



### Certifications





Unité : mm - Tolérance +/- 0.5mm. © Eco-Innov - Tous droits réservés.

## TECHNICAL CHARACTERISTICS

### Dimensions and weight

Diameter : 120 mm.

Total height: 41 mm.

Height above roadway: 5 mm in the center.

Weight: 560g.

### Materials

Polycarbonate, aluminium, stainless steel, monocrystalline silicon.

Recycling managed by ECOSYSTEM.

### Energy storage

Rechargeable Ni-Mh battery (up to 210h of autonomy).

### Working temperature range

-20°C à +80°C.

### Protection indices

IP 68 (watertightness).

IK 10 (impact resistance).

### Pressure resistance

Suitable for lanes occasionally used by lightweight vehicles.

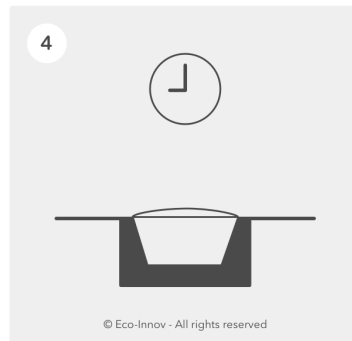
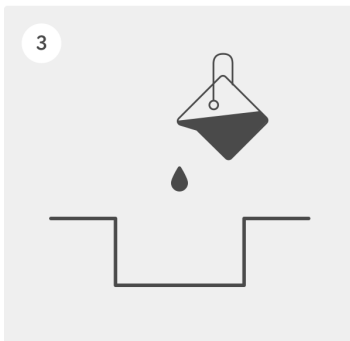
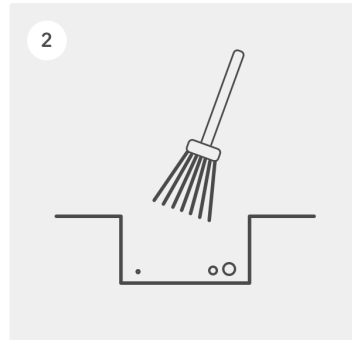
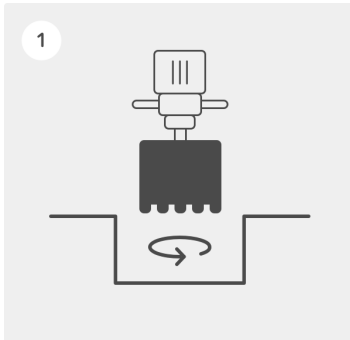
## LIGHTING CHARACTERISTICS

Vertical beaconing with one LED for a 360° visibility.

LED colours: cool white, warm white, blue, green or red.

Constant or breathing beaconing.

16 reflecting glass beads in addition.



1 - After deciding where the studs are to be installed, drill a hole with a minimum diameter of 130 mm and 40 mm deep.

2 - Carefully brush and clean the hole to remove any dust and traces of damp that would affect the efficiency of the adhesive.

3 - Pour the bonding adhesive into the hole to about 2/3 of its height. We recommend using Sikadur 30 two part epoxy adhesive.

4 - Press the stud into the adhesive, using the support brackets.

5 - Remove any residual adhesive with a dry cloth and leave it to set for several hours depending on the ambient temperature (see the adhesive manufacturer's instruction).

6 - Remove the 3 support brackets and replace it by the 3 additional screws.

Remark : make sure to keep the module and LEDs clean and protect them throughout these operations.

Failure to comply with these instructions may lead to the guarantee being suspended.

### Lifespan and warranty

Average lifespan more than 5 years.

2 year warranty.\*

Maintenance via the cover.

\* The warranty applies in the event of complete failure of the self-contained lighting system during normal usage. It covers replacement of the faulty article with an identical model delivered free of charge to destinations in France, after the faulty article has been returned and analysed. On-site intervention fees are not included. Mechanical damage are not covered by the warranty.

For optimal operation, we recommended to install our solar equipment on sites with good light exposure.

---

### Recycling

ECO-INNOV is a founder member of a network that recycles professional WEEE, managed by the eco-organisation ECOSYSTEM. We pay for our customers' electronic safety, lighting and regulation equipment to be collected at the end of its working life in order to meet our legal obligations and help them to meet theirs.

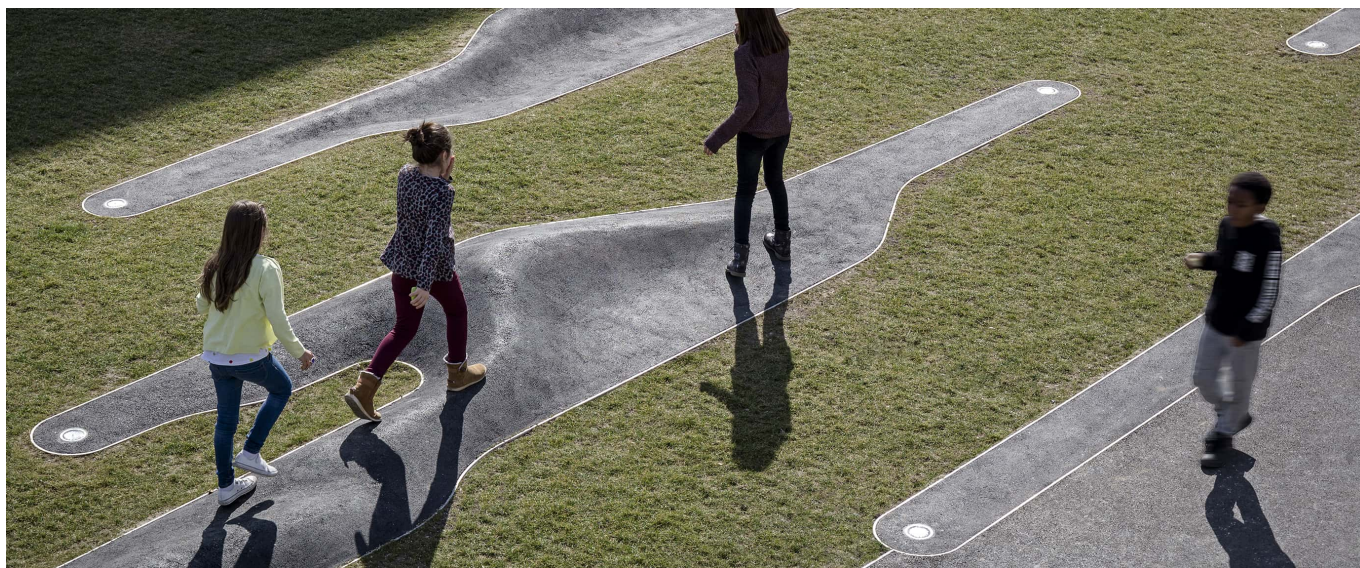
The unique identifier FR006801\_05MBCK attesting to registration in the register of producers in the EEE sector, pursuant to article L.541-10-13 of the Environmental Code, has been assigned by ADEME to the company ECO-INNOV (SIRET 451 859 409 00026). This identifier certifies its conformity with regard to its obligation to registration in the register of producers of Electrical and Electronic Equipment and the realisation of its declarations of placing on the market with Ecosystem.

ECO-INNOV is thus one of the first producers to offer its customers a simple and free solution for collecting their professional WEEE, regardless of when it was marketed. The equipment is collected via a network of professional waste collection centres and certain wholesalers.



[www.ecosystem.eco](http://www.ecosystem.eco)





**Landscape-sculpture.** "The fold childhood", sculpture-landscape by Gilles Brusset, City of Meyrin Contemporary Art Fund. Embedded solar studs ECO-120 with blue LED. Photography : Pierre-Yves Brunaud.